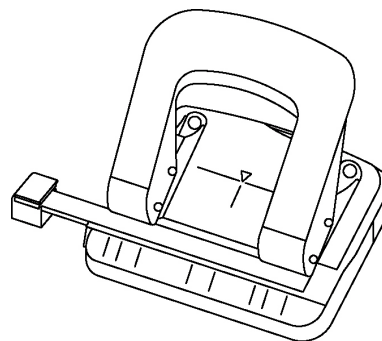


CARL ALISYS LP-20

Double lever punch

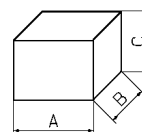
Materials:

- made in metal with base for collecting paper and guide in plastic



Technical / functional features:

- **Distance between the two holes:** 80 mm
- **Hole diameter:** 6 mm
- **Punching capacity :** 18 sheets (80 g/mq)
- **Colours:** Metallic blue, Metallic red, Pearl white
- **Guide:** in plastic, supplied with the punch
- **Weight:** 340 g (net) / 388 g (gross)
- **Box dimensions:** mm. 140 x 108 x 50
- **N° of items per carton:** 36 (packets of 6 pieces)
- **Carton dimensions:** cm 48 x 30 x 35,5 (AxBxC)
- **Carton weight:** 16 Kg

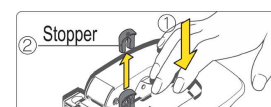


Descriptive notes:

CARL ALISYS is a powerful and at the same time smart punch, with a design modern and accurate in every detail, available in three shiny colours. It has a full flat gauge with a press-release paper holder for an easy and exact sheet positioning, from UNI A4 size (two or four holes) to B6 size.

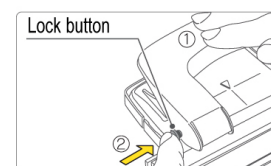
How to remove stopper:

1. Push down the handle
2. Remove the stopper carefully let the handle back



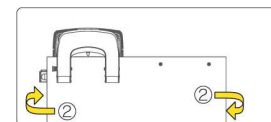
How to use handle lock:

1. Push down the handle
2. Push in the lock button



How to use as a 4-hole punch:

1. Align gauge at 4-hole position
2. Set paper and punch once, overturn paper and punch once more



CARL ALISYS LP-20 punch, manufactured by CARL MANUFACTURING CO., LTD. - TOKYO, is distributed in Italy exclusively by **BALMA, CAPODURI & C. s.p.a.**, which assures **a good after-sale service too.**

In addition:

The perforator is internally equipped with a second lever to create a synergistic effect with the handle by enhancing the power of punching and extremely reducing the effort needed to punch considerable thickness of paper, up to 18 sheets.